



**Suppliers: You aren't ready for
food traceability**
(Neither are your people or systems)

August 2, 2023

ACHESONGROUP.COM

Today's speakers

Ben Miller, Ph.D., MPH

Executive Vice President of Scientific and Regulatory Affairs

The Acheson Group (TAG)



- Epidemiologist and Foodborne Outbreak Investigation
- Led State of MN Human and Animal Food Regulatory Programs
- Served on the FDA's IFT Task Order 6 - Pilot Projects for Improving Product Tracing along the Food Supply System
- Ph.D. Thesis - The use of critical tracking events and key data elements to improve the traceability of food throughout the supply chain to reduce the burden of foodborne illnesses
- Working closely with the industry to understand and implement the Traceability Rule

Today's speakers

Bruce Christiansen

*Senior Vice President, Strategy and Product
ReposiTrak*



- 20+ years of experience throughout the food industry leading end-to-end business operations, supply chain strategy, marketing, merchandising, and technology.
- Served in leadership roles within Fortune 50, private, and progressive startup organizations.
- Experience includes work with national brands and organizations in retail grocery, and also for companies in the consumer product, consulting, technology, legal cannabis and food industries.
- Bruce attended University of Texas at El Paso, where he graduated with a Bachelor of Arts in Business Administration, earning dual degrees in finance and management.

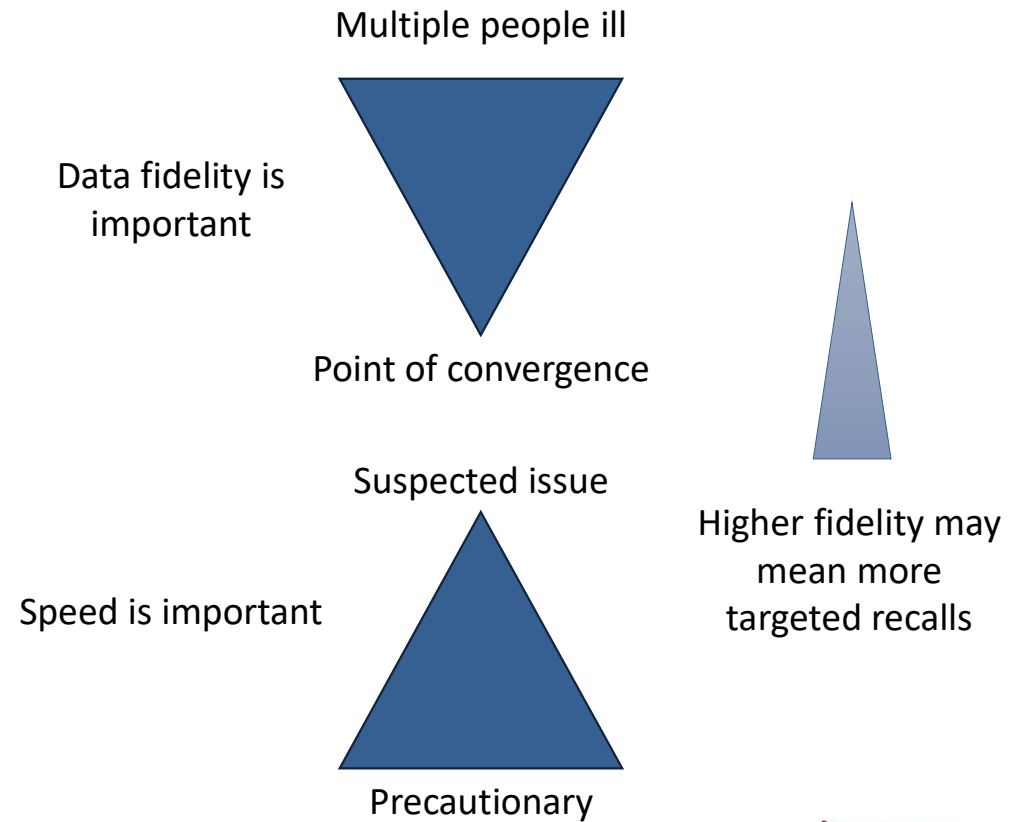
Today's Topics

- Having the information isn't enough
- Your customers will ask for different information in different formats
- Labels alone can't be the answer
- Why your customers can't accept your exemption

Why are we talking about traceability?

Traceability = Investigation

Recall = Corrective Action



Why are we talking about traceability?

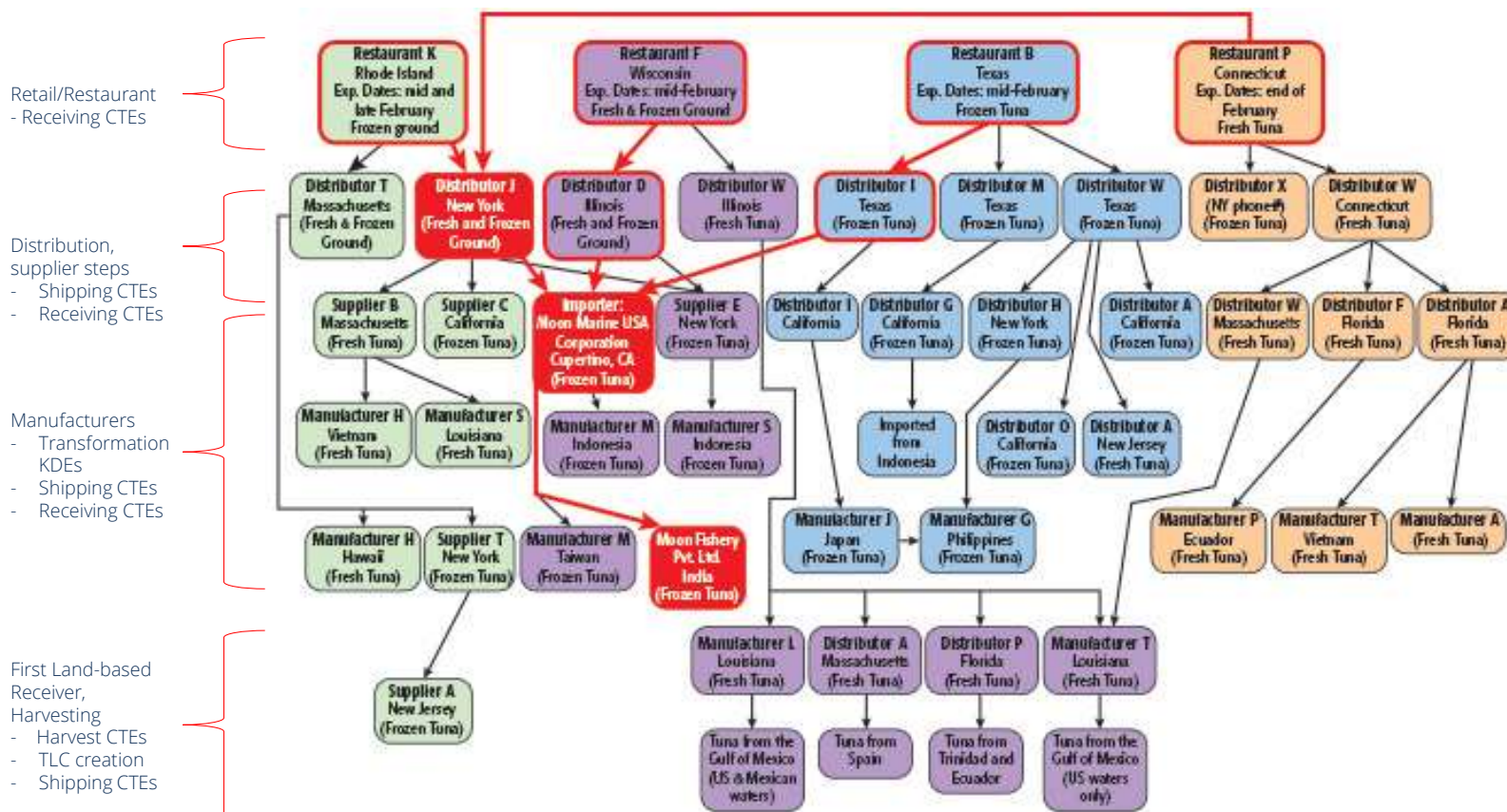
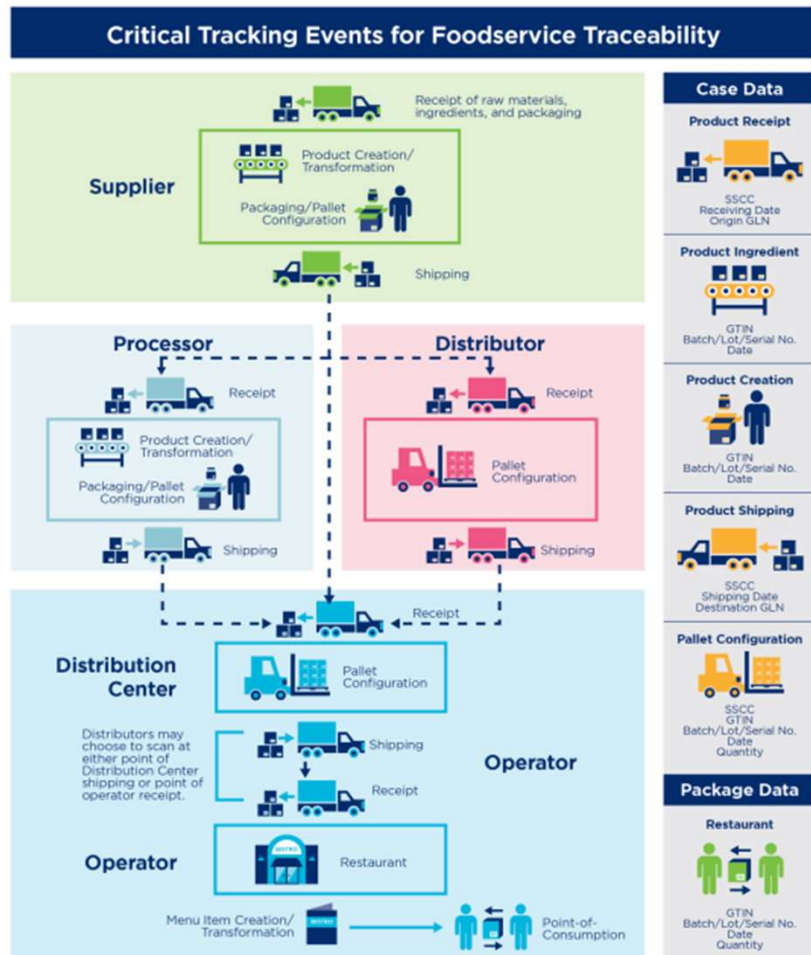


Figure 2: Salmonella Bareilly Traceback (The distribution of the contaminated tuna is outlined in red.)

<https://www.foodsafetynews.com/2014/10/traceback-investigations-mapping-the-maze/>

Isn't the industry already good at recalling product?



- Yes, but...we don't need to track things at the case level for recalls.
- The supply chain is DESIGNED to move in one-direction – FORWARD!
- The goal of FSMA 204 is to ensure more consistent collection of data to enable faster, more precise tracebacks.

<https://www.gs1us.org/content/dam/gs1us/documents/industries-insights/by-industry/food/guideline-toolkit/Guideline-Foodservice-Implementation-Guideline-for-Case-Level-Traceability-Using-GS1-Standards.pdf>

Why are we talking about traceability?

- Can you generate your own shipping KDEs and create a formatted record that can be saved for 24 months and easily retrieved on demand? If not, you aren't ready for FSMA 204.
- If you have dozens or hundreds of customers, what will you do if most of them ask you to share traceability data through a proprietary system or portal? How will you manage this level of complexity across a myriad of customer systems?
- If you found a system that was fully automated and extremely low cost, and solved the problem for you and your customer's DC receiving, wouldn't you want every customer to use it?

Challenges for Implementation

- Case-level traceability (traceability lot codes)
- Change in operations
- Data management systems
- Data standards
- Error rates
- Do you trace everything, not just FTL foods?
- Not "just" a food safety problem – requires a multidisciplinary approach
 - FSQA, IT, Supply Chain, Logistics, etc.

What tools are needed?

- Training
 - PCQI approach to traceability
- How to map your supply chain (internally and externally)
- Checklist of questions and processes for a multidisciplinary team
- Traceability Plan templates
- Compliant Data sharing examples
 - If I use a traceability lot code reference, what is considered compliant?

What resources are available?



The Global Language of Business

Fresh Fruit and Vegetable Traceability Guideline

Implementing traceability in fresh fruit & vegetable supply chains using the GS1 standards for identification, data capture, data sharing & the GS1 Global Traceability Standard.

Release 2.0, Ratified, Feb 2021

- GS1
 - <https://www.gs1us.org/industries-and-insights/by-industry/foodservice/standards-in-use/food-safety#fsma>
 - Guidance documents
 - Sector-specific case studies
- IFT Global Food Traceability Center
 - <https://www.ift.org/gftc/research-and-resources>
 - Food Traceability Library
 - [A Guidance Document on the Best Practices in Food Traceability](#)
- TAG
 - www.achesongroup.com/traceability
 - Traceability Toolkit

What resources are available?

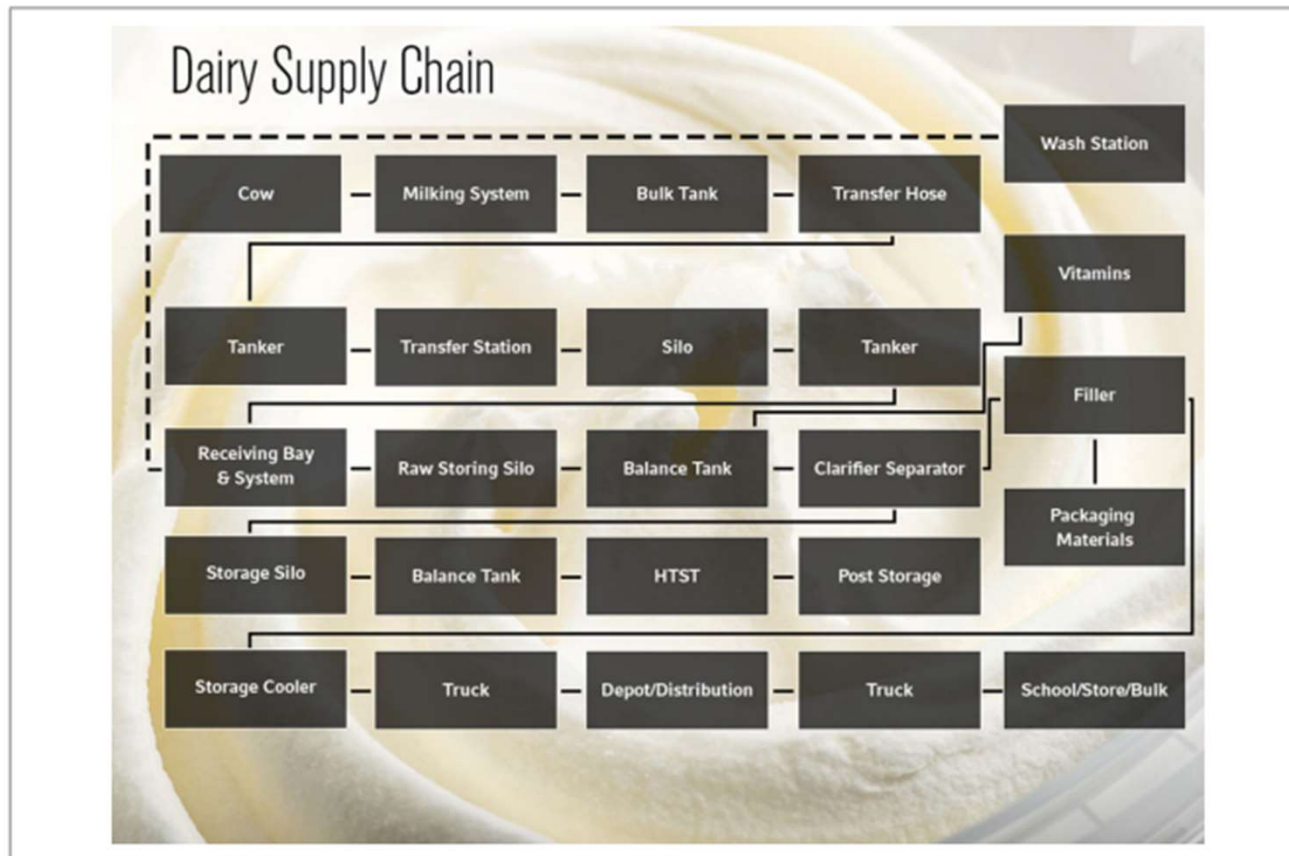


Figure 3—Typical liquid milk supply chain.

Zhang, Jianrong, and Tejas Bhatt. "A guidance document on the best practices in food traceability." *Comprehensive Reviews in Food Science and Food Safety* 13.5 (2014): 1074-1103.

What resources are available?

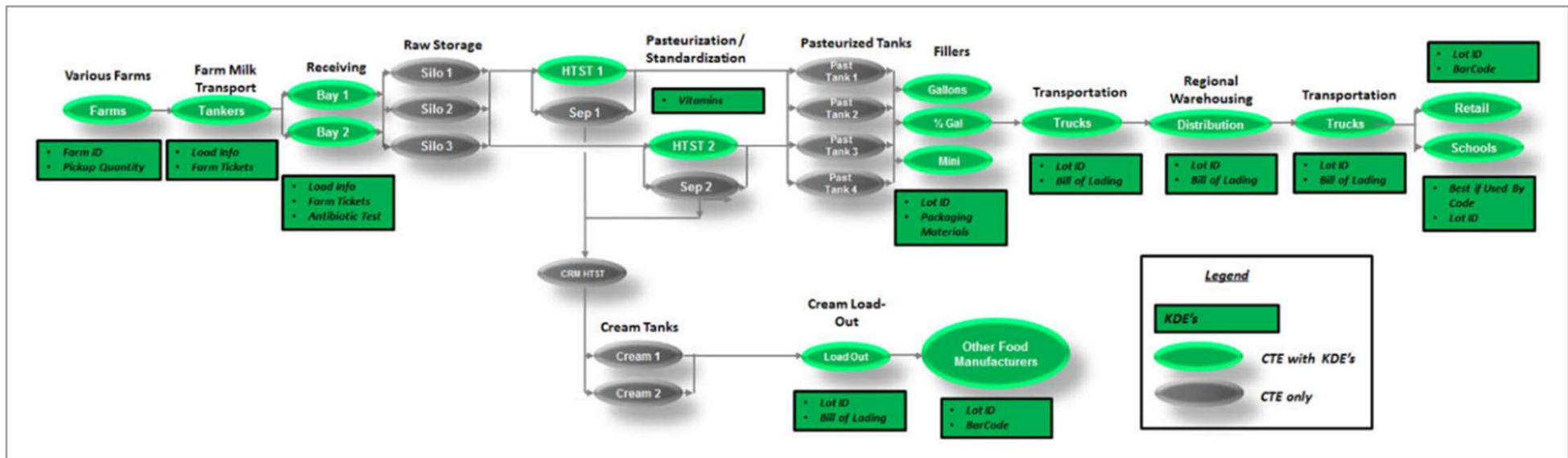


Figure 4—Typical fluid milk CTEs and KDEs from farm to consumer. Note: The green boxes contain the KDEs or points at which outside ingredients or materials are integrated into the process.

Zhang, Jianrong, and Tejas Bhatt. "A guidance document on the best practices in food traceability." *Comprehensive Reviews in Food Science and Food Safety* 13.5 (2014): 1074-1103.

What IT tools are available?

- IT Tools
 - Integration in existing IT systems?
 - Are new systems needed?
 - CTEs and KDEs describe when and what needs to be collected – not the data standard
- Data interoperability is key! Is everyone in your supply chain using the same data standard

What's Next?

- How do you know if you're impacted by FSMA 204?
- Do you need help producing your Traceability Plan?
- Are other functional areas of your business AWARE that FSMA 204 is coming and know what they need to do? (Legal, supply chain, IT, food safety)
- What do you need to do NOW to meet the enforcement deadline (January 20, 2026)?

Schedule a Traceability Assessment

Learn how the FSMA 204 food traceability rule applies to you.

- TAG is providing an assessment to help you determine what CTEs and KDEs apply to you
- Zoom call and initial written assessment
- \$500

Email "Traceability Rule Assessment": info@achesongroup.com

Questions?



Contact Us



www.achesongroup.com
info@achesongroup.com
800-401-2239



www.repositrak.com
<https://repositrak.com/contact-us/>
888-842-5465





Thank you

ACHESONGROUP.COM